

JENSEN PARK ESTATES · PHASE TWO

A Subdivision Located in Section 28, Township 37 South, Range 41 East, Martin County, Florida

UNPLATTED

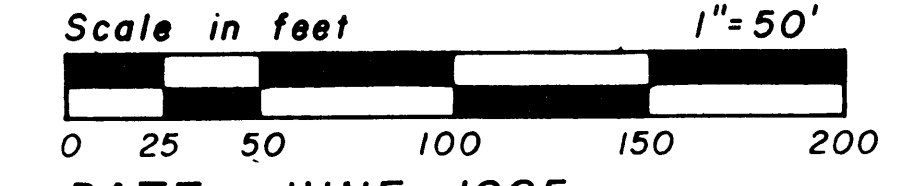
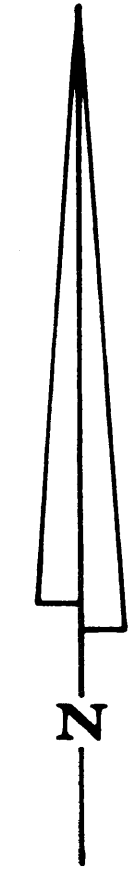
I, Louise V. Isaacs, Clerk of the Circuit Court of Martin County, Florida, hereby certify that this Plat was filed for record in Plat Book 8, Page 9, Martin County, Florida, Public Records, this day of June, 1985.

Louise V. Isaacs, Clerk Circuit Court Martin County, Florida

By: Deputy Clerk

File No.

(Circuit Court Seal)



DATE: JUNE 1985

NOTE:

BASIS OF BEARINGS: Bearings shown hereon are relative to bearings shown on plat of JENSEN PARK ESTATES · PHASE ONE (Plat Bk 8, Pg. 30, Martin County, public records).

There shall be no lot splits except to create larger lots.

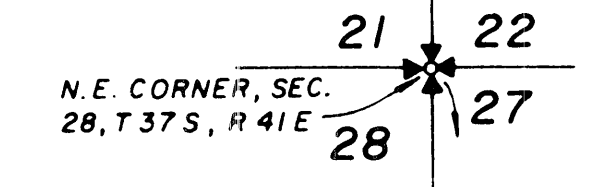
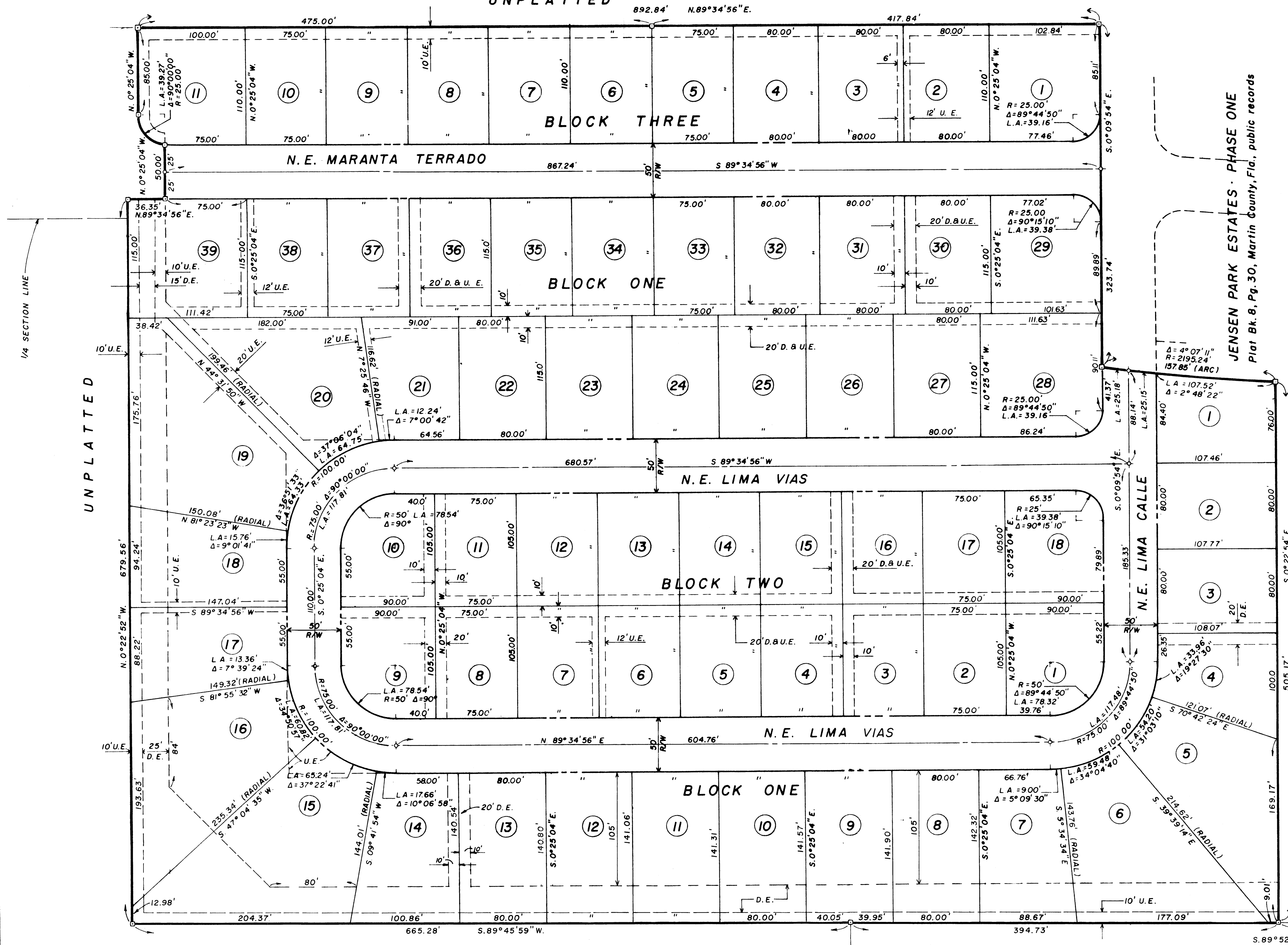
Indicates location of P.R.M. (permanent reference monument).

Indicates location of P.C.P. (permanent control point).

D.E. indicates Drainage Easement; U.E. indicates Utilities Easement D.B.U.E. indicates combined drainage and utilities easement

There shall be a 10 foot wide utilities easement adjacent to existing and proposed road rights of way shown hereon.

JENSEN PARK ESTATES · PHASE ONE
Plat Bk. 8, Pg. 30, Martin County, Fla., public records



THIS INSTRUMENT WAS PREPARED BY:
C. CALVERT MONTGOMERY & ASSOCIATES, INC.
256 Osceola Avenue P.O. Box 92
Stuart, Florida 33495

UNPLATTED